



EDELSTAHL / STAINLESS STEEL
VERBINDUNGSTECHNIK
FLUID CONNECTORS

Schweißkegel-Verschraubungen mit O-Ring Weld Nipple Couplings with O-ring



10

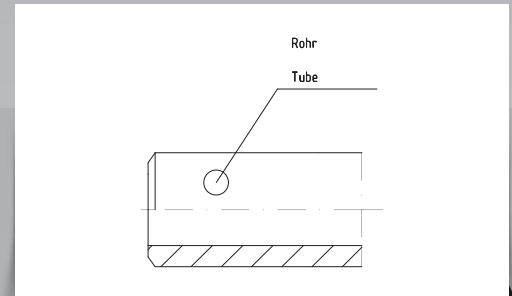


SCHWEISSKEGEL-VERSCHRAUBUNGEN MIT O-RING WELD NIPPLE COUPLINGS WITH O-RING

Produktgruppen	Product-Groups	Seite / Page	
Montageanleitung	Assembly Instruction	10.2-10.3	
ESV - Einschweiss - Schott - Verschraubungen	ESV - Bulkhead - Couplings		
ESV - Standard	ESV - Standard	10.4	
ESV - SC	ESV - SC	10.5	
ESV - OMD	ESV - OMD	10.6	
ASV - Gerade - Anschweiss - Verschraubungen	ASV - Weld - Stub - Couplings		
ASV - Standard	ASV - Standard	10.7	
ASV - SC	ASV - SC	10.8	
ASV - OMD	ASV - OMD	10.9	
WAS - Winkel - Anschweiss - Verschraubungen	WAS - Weld - Stub - Elbow - Couplings		
WAS - Standard	WAS - Standard	10.10	
WAS - SC	WAS - SC	10.11	
WAS - OMD	WAS - OMD	10.12	
ASV-K - Schweißkegel - Verschraubungen	ASV-K - Welding - Nipple - Couplings		
ASV-K - Standard	ASV-K - Standard	10.13	
ASV-K - SC	ASV-K - SC	10.14	
ASV-K - OMD	ASV-K - OMD	10.15	
SKV - Schweißnippel	SKV - Welding - Nipples		
SKV - Schweißnippel	SKV - Welding Nipples	10.16	
SKV-R - Schweißnippel - Reduzierungen	SKV-R - Welding - Nipple - Reducings		
SKV-R - Schweißnippel - Reduzierungen	SKV-R - Welding Nipple Reducings	10.18	
SKV-RB - Schweißnippel - Rohrbögen - 90°	SKV-RB - Welding - Nipple - Elbows - 90°		
SKV-RB - Schweißnippel - Rohrbögen - 90°	SKV-RB - Welding Nipple Elbows - 90°	10.19	

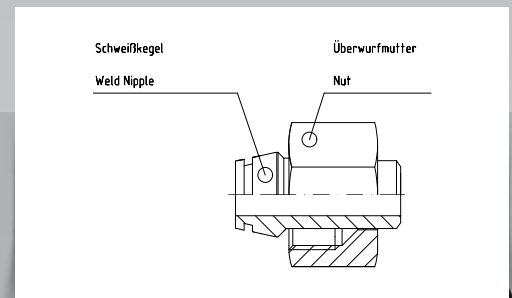
1.

Rohr rechtwinklig ablängen, entgraten und anfasen für V-Naht nach DIN 2559.



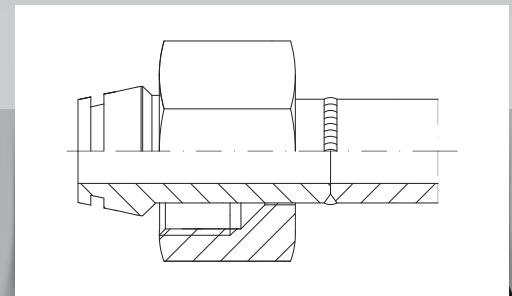
2.

Überwurfmutter, wie abgebildet, über den Schweißkegel schieben.



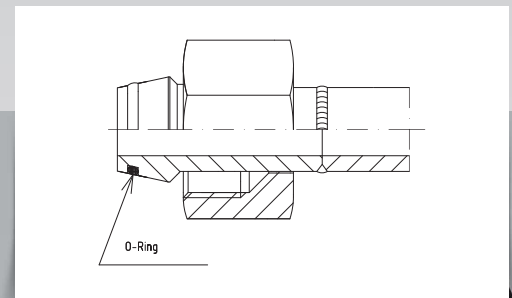
3.

Schweißkegel und Rohr nach den Schweißrichtlinien verschweißen. Darauf achten, dass keine Schweißperlen ins Rohrinne gelangen. Kegel, Nut und Stutzenkonus müssen sauber sein.



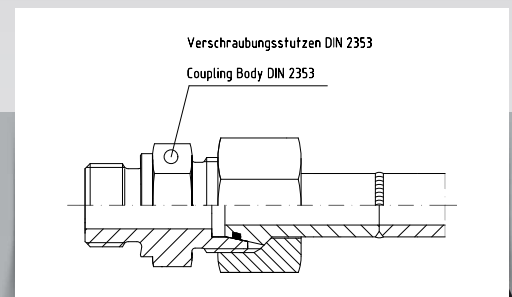
4.

O-Ring erst nach dem Schweißen in die Nut einlegen. Er darf sich nicht verdrehen. Schweißkegel, Konus und Innen- und Außengewinde einölen, nicht einfetten.



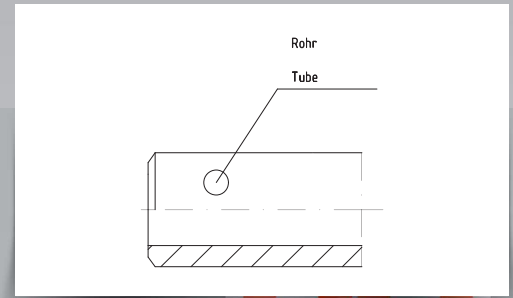
5.

Überwurfmutter von Hand auf den Stutzen schrauben, dann mit dem Schlüssel ca. 1/4 - 1/3 Umdrehung anziehen. Das Rohr mit angeschweißtem Kegel muss spannungsfrei verschraubt und verlegt werden.



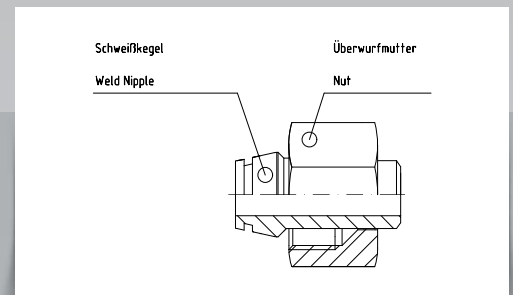
1.

Cut tube at right angles and chamfer it for V-welding seam to DIN 2559.



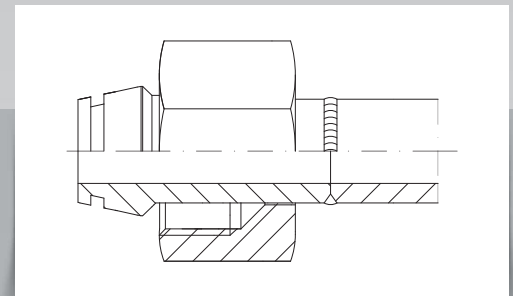
2.

Slide nut over weld nipple arrangement as shown above.



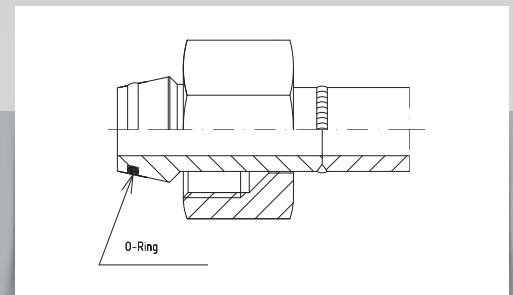
3.

Weld nipple and tube are welded according to the general welding instructions. Please ensure that no globules of weld enter the inside of the tube. Nipple, groove and taper must be clean.



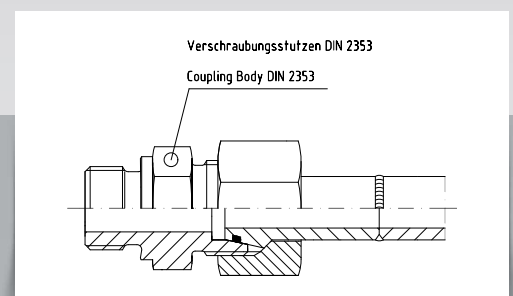
4.

O-ring is only to be inserted into groove after welding. O-ring must not be twisted. Do not grease, but oil nipple, taper inside and outside of thread.



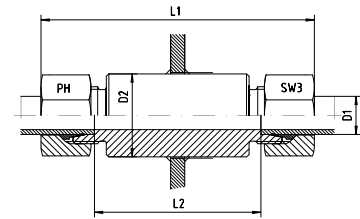
5.

Screw the nut by hand onto the body, tighten nut with a spanner approx. 1/4 - 1/3 of a turn. Tube with welded nipple has to be installed free of tension.



Einschweiß-Schottverschraubungen

Welding Bulkhead Connections



Reihe / Series L

Druck Pressure	Rohr A.D. Tube O.D.		Ca. Maße Approx. Dimensions			Bemerkungen Notes	Bestellzeichen Order-Code
PN	D1	D2	L1	L2	SW3		
500	6	18	85,0	56,0	14		ESV-L-06
500	8	20	85,0	56,0	17		ESV-L-08
500	10	22	87,0	58,0	19		ESV-L-10
400	12	25	87,0	58,0	22		ESV-L-12
400	15	28	100,0	70,0	27		ESV-L-15
400	18	32	101,0	69,0	32		ESV-L-18
250	22	36	105,0	73,0	36		ESV-L-22
250	28	40	106,0	73,0	41		ESV-L-28
250	35	50	114,0	71,0	50		ESV-L-35
250	42	60	115,0	70,0	60		ESV-L-42

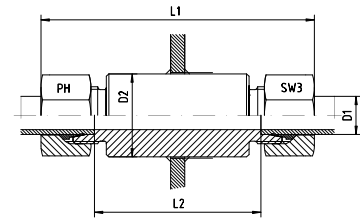
Reihe / Series S

Druck Pressure	Rohr A.D. Tube O.D.		Ca. Maße Approx. Dimensions			Bemerkungen Notes	Bestellzeichen Order-Code
PN	D1	D2	L1	L2	SW3		
800	6	20	89,0	60,0	17		ESV-S-06
800	8	22	89,0	60,0	19		ESV-S-08
800	10	25	91,0	59,0	22		ESV-S-10
630	12	28	91,0	59,0	24		ESV-S-12
630	14	30	107,0	72,0	27		ESV-S-14
630	16	35	107,0	71,0	30		ESV-S-16
420	20	38	114,0	71,0	36		ESV-S-20
420	25	45	120,0	72,0	46		ESV-S-25
420	30	50	126,0	73,0	50		ESV-S-30
420	38	60	133,0	72,0	60		ESV-S-38



Einschweiß-Schottverschraubungen

Welding Bulkhead Connections



Reihe / Series L

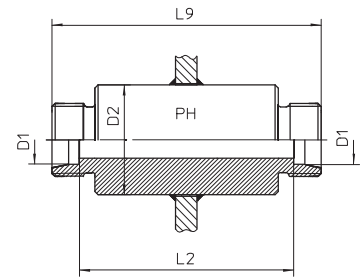
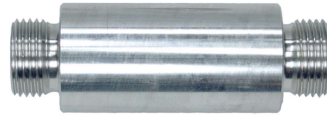
Druck Pressure	Rohr A.D. Tube O.D.		Ca. Maße Approx. Dimensions			Bemerkungen Notes	Bestellzeichen Order-Code
PN	D1	D2	L1	L2	SW3		
500	6	18	85,0	56,0	14		ESV-L-06-SC
500	8	20	85,0	56,0	17		ESV-L-08-SC
500	10	22	87,0	58,0	19		ESV-L-10-SC
400	12	25	87,0	58,0	22		ESV-L-12-SC
400	15	28	100,0	70,0	27		ESV-L-15-SC
400	18	32	101,0	69,0	32		ESV-L-18-SC
250	22	36	105,0	73,0	36		ESV-L-22-SC
250	28	40	106,0	73,0	41		ESV-L-28-SC
250	35	50	114,0	71,0	50		ESV-L-35-SC
250	42	60	115,0	70,0	60		ESV-L-42-SC

Reihe / Series S

Druck Pressure	Rohr A.D. Tube O.D.		Ca. Maße Approx. Dimensions			Bemerkungen Notes	Bestellzeichen Order-Code
PN	D1	D2	L1	L2	SW3		
800	6	20	89,0	60,0	17		ESV-S-06-SC
800	8	22	89,0	60,0	19		ESV-S-08-SC
800	10	25	91,0	59,0	22		ESV-S-10-SC
630	12	28	91,0	59,0	24		ESV-S-12-SC
630	14	30	107,0	72,0	27		ESV-S-14-SC
630	16	35	107,0	71,0	30		ESV-S-16-SC
420	20	38	114,0	71,0	36		ESV-S-20-SC
420	25	45	120,0	72,0	46		ESV-S-25-SC
420	30	50	126,0	73,0	50		ESV-S-30-SC
420	38	60	133,0	72,0	60		ESV-S-38-SC

Einschweiß-Schottverschraubungsstutzen

Welding Bulkhead Connection Bodies



Reihe / Series L

Druck Pressure	Rohr A.D. Tube O.D.	Ca. Maße Approx. Dimensions			Bemerkungen Notes	Bestellzeichen Order-Code
PN	D1	D2	L2	L9		
500	6	18	56,0	70,0		ESV-L-06-OMD
500	8	20	56,0	70,0		ESV-L-08-OMD
500	10	22	58,0	72,0		ESV-L-10-OMD
400	12	25	58,0	72,0		ESV-L-12-OMD
400	15	28	70,0	84,0		ESV-L-15-OMD
400	18	32	69,0	84,0		ESV-L-18-OMD
250	22	36	73,0	88,0		ESV-L-22-OMD
250	28	40	73,0	88,0		ESV-L-28-OMD
250	35	50	71,0	92,0		ESV-L-35-OMD
250	42	60	70,0	92,0		ESV-L-42-OMD

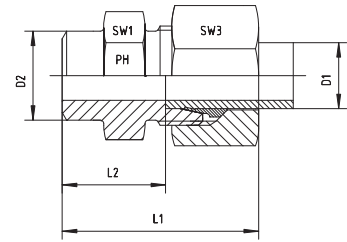
Reihe / Series S

Druck Pressure	Rohr A.D. Tube O.D.	Ca. Maße Approx. Dimensions			Bemerkungen Notes	Bestellzeichen Order-Code
PN	D1	D2	L2	L9		
800	6	20	60,0	74,0		ESV-S-06-OMD
800	8	22	60,0	74,0		ESV-S-08-OMD
800	10	25	59,0	74,0		ESV-S-10-OMD
630	12	28	59,0	74,0		ESV-S-12-OMD
630	14	30	72,0	88,0		ESV-S-14-OMD
630	16	35	71,0	88,0		ESV-S-16-OMD
420	20	38	71,0	92,0		ESV-S-20-OMD
420	25	45	72,0	96,0		ESV-S-25-OMD
420	30	50	73,0	100,0		ESV-S-30-OMD
420	38	60	72,0	104,0		ESV-S-38-OMD



Gerade Anschweißverschraubungen

Straight Welding Bosses



Reihe / Series L

Druck Pressure	Rohr A.D. Tube O.D.		Ca. Maße Approx. Dimensions				Bemerkungen Notes	Bestellzeichen Order-Code
PN	D1	D2	L1	L2	SW1	SW3		
500	6	10	29,0	14,0	12	14		ASV-L-06
500	8	12	31,0	16,0	14	17		ASV-L-08
500	10	14	33,0	18,0	17	19		ASV-L-10
400	12	16	33,0	18,0	19	27		ASV-L-12
400	15	19	37,0	22,0	22	27		ASV-L-15
400	18	22	40,0	23,5	27	32		ASV-L-18
250	22	27	45,0	28,5	32	36		ASV-L-22
250	28	32	47,0	30,5	41	41		ASV-L-28
250	35	40	54,0	32,5	46	50		ASV-L-35
250	42	46	58,0	35,0	55	60		ASV-L-42

Reihe / Series S

Druck Pressure	Rohr A.D. Tube O.D.		Ca. Maße Approx. Dimensions				Bemerkungen Notes	Bestellzeichen Order-Code
PN	D1	D2	L1	L2	SW1	SW3		
800	6	11	34,0	19,0	14	17		ASV-S-06
800	8	13	36,0	21,0	17	19		ASV-S-08
800	10	15	39,0	22,5	19	22		ASV-S-10
630	12	17	41,0	24,5	22	24		ASV-S-12
630	14	19	45,0	27,0	24	27		ASV-S-14
630	16	21	45,0	26,5	27	30		ASV-S-16
420	20	26	51,0	29,5	32	36		ASV-S-20
420	25	31	56,0	32,0	41	46		ASV-S-25
420	30	36	62,0	35,5	46	50		ASV-S-30
420	38	44	69,0	38,0	55	60		ASV-S-38

ASV - GERADE - ANSCHWEISS - VERSCHRAUBUNGEN

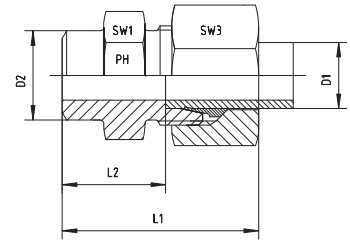
ASV - WELD - STUB - COUPLINGS



EDELSTAHL / STAINLESS STEEL
VERBINDUNGSTECHNIK
FLUID CONNECTORS

Gerade Anschweißverschraubungen

Straight Welding Bosses



Reihe / Series L

Druck Pressure	Rohr A.D. Tube O.D.		Ca. Maße Approx. Dimensions				Bemerkungen Notes	Bestellzeichen Order-Code
PN	D1	D2	L1	L2	SW1	SW3		
500	6	10	29,0	14,0	12	14		ASV-L-06-SC
500	8	12	31,0	16,0	14	17		ASV-L-08-SC
500	10	14	33,0	18,0	17	19		ASV-L-10-SC
400	12	16	33,0	18,0	19	27		ASV-L-12-SC
400	15	19	37,0	22,0	22	27		ASV-L-15-SC
400	18	22	40,0	23,5	27	32		ASV-L-18-SC
250	22	27	45,0	28,5	32	36		ASV-L-22-SC
250	28	32	47,0	30,5	41	41		ASV-L-28-SC
250	35	40	54,0	32,5	46	50		ASV-L-35-SC
250	42	46	58,0	35,0	55	60		ASV-L-42-SC

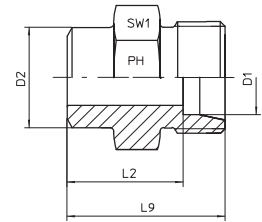
Reihe / Series S

Druck Pressure	Rohr A.D. Tube O.D.		Ca. Maße Approx. Dimensions				Bemerkungen Notes	Bestellzeichen Order-Code
PN	D1	D2	L1	L2	SW1	SW3		
800	6	11	34,0	19,0	14	17		ASV-S-06-SC
800	8	13	36,0	21,0	17	19		ASV-S-08-SC
800	10	15	39,0	22,5	19	22		ASV-S-10-SC
630	12	17	41,0	24,5	22	24		ASV-S-12-SC
630	14	19	45,0	27,0	24	27		ASV-S-14-SC
630	16	21	45,0	26,5	27	30		ASV-S-16-SC
420	20	26	51,0	29,5	32	36		ASV-S-20-SC
420	25	31	56,0	32,0	41	46		ASV-S-25-SC
420	30	36	62,0	35,5	46	50		ASV-S-30-SC
420	38	44	69,0	38,0	55	60		ASV-S-38-SC



Gerade Anschweißverschraubungsstutzen

Straight Welding Boss Bodies



Reihe / Series L

Druck Pressure	Rohr A.D. Tube O.D.	Ca. Maße Approx. Dimensions				Bemerkungen Notes	Bestellzeichen Order-Code
PN	D1	D2	L2	L9	SW1		
500	6	10	14,0	21,0	12,0		ASV-L-06-OMD
500	8	12	16,0	23,0	14,0		ASV-L-08-OMD
500	10	14	18,0	25,0	17,0		ASV-L-10-OMD
400	12	16	18,0	25,0	19,0		ASV-L-12-OMD
400	15	19	22,0	29,0	22,0		ASV-L-15-OMD
400	18	22	23,5	31,0	27,0		ASV-L-18-OMD
250	22	27	28,5	36,0	32,0		ASV-L-22-OMD
250	28	32	30,5	38,0	41,0		ASV-L-28-OMD
250	35	40	32,5	43,0	46,0		ASV-L-35-OMD
250	42	46	35,0	46,0	55,0		ASV-L-42-OMD

Reihe / Series S

Druck Pressure	Rohr A.D. Tube O.D.	Ca. Maße Approx. Dimensions				Bemerkungen Notes	Bestellzeichen Order-Code
PN	D1	D2	L2	L9	SW1		
800	6	11	19,0	26,0	14,0		ASV-S-06-OMD
800	8	13	21,0	28,0	17,0		ASV-S-08-OMD
800	10	15	22,5	30,0	19,0		ASV-S-10-OMD
630	12	17	24,5	32,0	22,0		ASV-S-12-OMD
630	14	19	27,0	35,0	24,0		ASV-S-14-OMD
630	16	21	26,5	35,0	27,0		ASV-S-16-OMD
420	20	26	29,5	40,0	32,0		ASV-S-20-OMD
420	25	31	32,0	44,0	41,0		ASV-S-25-OMD
420	30	36	35,5	49,0	46,0		ASV-S-30-OMD
420	38	44	38,0	54,0	55,0		ASV-S-38-OMD

WAS - WINKEL - ANSCHWEISS - VERSCHRAUBUNGEN

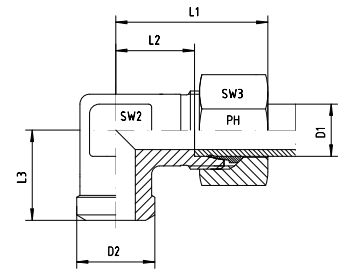
WAS - WELD - STUB - ELBOW - COUPLINGS



EDELSTAHL / STAINLESS STEEL
VERBINDUNGSTECHNIK
FLUID CONNECTORS

Winkel-Anschweißverschraubungen

Elbow Welding Couplings



Reihe / Series L

Druck Pressure	Rohr A.D. Tube O.D.		Ca. Maße Approx. Dimensions					Bemerkungen Notes	Bestellzeichen Order-Code
	D1	D2	L1	L2	L3	SW2	SW3		
500	6	10	27,0	12,0	19,0	12	14		WAS-L-06
500	8	12	29,0	14,0	23,0	12	17		WAS-L-08
500	10	14	30,0	15,0	24,0	14	19		WAS-L-10
400	12	16	32,0	17,0	25,0	17	22		WAS-L-12
400	15	19	36,0	21,0	30,0	19	27		WAS-L-15
400	18	22	40,0	23,5	33,0	24	32		WAS-L-18
250	22	27	44,0	27,5	37,0	27	36		WAS-L-22
250	28	32	47,0	30,5	42,0	36	41		WAS-L-28
250	35	40	56,0	34,5	49,0	41	50		WAS-L-35
250	42	46	63,0	40,0	57,0	50	60		WAS-L-42

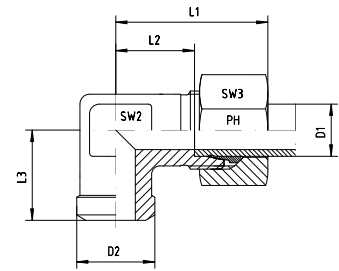
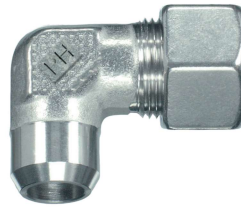
Reihe / Series S

Druck Pressure	Rohr A.D. Tube O.D.		Ca. Maße Approx. Dimensions					Bemerkungen Notes	Bestellzeichen Order-Code
	D1	D2	L1	L2	L3	SW2	SW3		
800	6	11	31,0	16,0	23,0	12	17		WAS-S-06
800	8	13	32,0	17,0	24,0	14	19		WAS-S-08
800	10	15	34,0	17,5	25,0	17	22		WAS-S-10
630	12	17	38,0	21,5	29,0	17	24		WAS-S-12
630	14	19	40,0	22,0	30,0	19	27		WAS-S-14
630	16	21	43,0	24,5	33,0	24	30		WAS-S-16
420	20	26	48,0	26,5	37,0	27	36		WAS-S-20
420	25	31	54,0	30,0	42,0	36	46		WAS-S-25
420	30	36	62,0	35,5	49,0	41	50		WAS-S-30
420	38	44	72,0	41,0	57,0	50	60		WAS-S-38



Winkel-Anschweißverschraubungen

Elbow Welding Couplings



Reihe / Series L

Druck Pressure	Rohr A.D. Tube O.D.		Ca. Maße Approx. Dimensions					Bemerkungen Notes	Bestellzeichen Order-Code
	D1	D2	L1	L2	L3	SW2	SW3		
500	6	10	27,0	12,0	19,0	12	14		WAS-L-06-SC
500	8	12	29,0	14,0	23,0	12	17		WAS-L-08-SC
500	10	14	30,0	15,0	24,0	14	19		WAS-L-10-SC
400	12	16	32,0	17,0	25,0	17	22		WAS-L-12-SC
400	15	19	36,0	21,0	30,0	19	27		WAS-L-15-SC
400	18	22	40,0	23,5	33,0	24	32		WAS-L-18-SC
250	22	27	44,0	27,5	37,0	27	36		WAS-L-22-SC
250	28	32	47,0	30,5	42,0	36	41		WAS-L-28-SC
250	35	40	56,0	34,5	49,0	41	50		WAS-L-35-SC
250	42	46	63,0	40,0	57,0	50	60		WAS-L-42-SC

Reihe / Series S

Druck Pressure	Rohr A.D. Tube O.D.		Ca. Maße Approx. Dimensions					Bemerkungen Notes	Bestellzeichen Order-Code
	D1	D2	L1	L2	L3	SW2	SW3		
800	6	11	31,0	16,0	23,0	12	17		WAS-S-06-SC
800	8	13	32,0	17,0	24,0	14	19		WAS-S-08-SC
800	10	15	34,0	17,5	25,0	17	22		WAS-S-10-SC
630	12	17	38,0	21,5	29,0	17	24		WAS-S-12-SC
630	14	19	40,0	22,0	30,0	19	27		WAS-S-14-SC
630	16	21	43,0	24,5	33,0	24	30		WAS-S-16-SC
420	20	26	48,0	26,5	37,0	27	36		WAS-S-20-SC
420	25	31	54,0	30,0	42,0	36	46		WAS-S-25-SC
420	30	36	62,0	35,5	49,0	41	50		WAS-S-30-SC
420	38	44	72,0	41,0	57,0	50	60		WAS-S-38-SC

WAS - WINKEL - ANSCHWEISS - VERSCHRAUBUNGEN

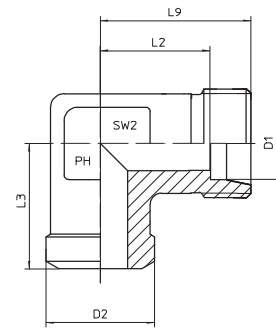
WAS - WELD - STUB - ELBOW - COUPLINGS



EDELSTAHL / STAINLESS STEEL
VERBINDUNGSTECHNIK
FLUID CONNECTORS

Winkel-Anschweißverschraubungsstutzen

Elbow Welding Coupling Bodies



Reihe / Series L

Druck Pressure	Rohr A.D. Tube O.D.		Ca. Maße Approx. Dimensions				Bemerkungen Notes	Bestellzeichen Order-Code
PN	D1	D2	L2	L3	L9	SW2		
500	6	10	12,0	19,0	19,0	12,0		WAS-L-06-OMD
500	8	12	14,0	23,0	21,0	12,0		WAS-L-08-OMD
500	10	14	15,0	24,0	22,0	14,0		WAS-L-10-OMD
400	12	16	17,0	25,0	24,0	17,0		WAS-L-12-OMD
400	15	19	21,0	30,0	28,0	19,0		WAS-L-15-OMD
400	18	22	23,5	33,0	31,0	24,0		WAS-L-18-OMD
250	22	27	27,5	37,0	35,0	27,0		WAS-L-22-OMD
250	28	32	30,5	42,0	38,0	36,0		WAS-L-28-OMD
250	35	40	34,5	49,0	45,0	41,0		WAS-L-35-OMD
250	42	46	40,0	57,0	51,0	50,0		WAS-L-42-OMD

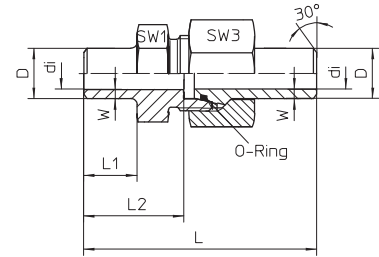
Reihe / Series S

Druck Pressure	Rohr A.D. Tube O.D.		Ca. Maße Approx. Dimensions				Bemerkungen Notes	Bestellzeichen Order-Code
PN	D1	D2	L2	L3	L9	SW2		
800	6	11	16,0	23,0		12,0		WAS-S-06-OMD
800	8	13	17,0	24,0	24,0	14,0		WAS-S-08-OMD
800	10	15	17,5	25,0	25,0	17,0		WAS-S-10-OMD
630	12	17	21,5	29,0	29,0	17,0		WAS-S-12-OMD
630	14	19	22,0	30,0		19,0		WAS-S-14-OMD
630	16	21	24,5	33,0	33,0	24,0		WAS-S-16-OMD
420	20	26	26,5	37,0	37,0	27,0		WAS-S-20-OMD
420	25	31	30,0	42,0	42,0	36,0		WAS-S-25-OMD
420	30	36	35,5	49,0	49,0	41,0		WAS-S-30-OMD
420	38	44	41,0	57,0	57,0	50,0		WAS-S-38-OMD



Schweißkegel-Verschraubungen
Mit O-Ring Abdichtung - NBR
Auf Anfrage: FPM

Welding Nipple Couplings
With O-ring Sealing - NBR
On request: FPM



Reihe / Series S

Druck Pressure	Rohr A.D. Tube O.D.	Ca. Maße Approx. Dimensions						O-Ring O-ring	Bemerkungen Notes	Bestellzeichen Order-Code
PN	D+W	L	L1	L2	di	SW1	SW3			
528	6 x 1,5	52,0	10,0	20,0	3,0	14	17	4,0 x 1,5	ASV-K-6x1,5	
414	8 x 1,5	52,0	10,0	20,0	5,0	17	19	6,0 x 1,5	ASV-K-8x1,5	
528	8 x 2	52,0	10,0	20,0	4,0	17	19	6,0 x 1,5	ASV-K-8x2	
249	10 x 1	56,5	9,0	23,5	8,0	19	22	8,0 x 1,5	ASV-K-10x1	
358	10 x 1,5	56,5	9,0	23,5	7,0	19	22	8,0 x 1,5	ASV-K-10x1,5	
460	10 x 2	56,5	9,0	23,5	6,0	19	22	8,0 x 1,5	ASV-K-10x2	
305	12 x 1,5	63,0	14,0	28,5	9,0	22	24	10,0 x 1,5	ASV-K-12x1,5	
393	12 x 2	63,0	14,0	28,5	8,0	22	24	10,0 x 1,5	ASV-K-12x2	
476	12 x 2,5	63,0	14,0	28,5	7,0	22	24	10,0 x 1,5	ASV-K-12x2,5	
343	14 x 2	73,5	15,0	31,5	10,0	24	27	10,0 x 2,0	ASV-K-14x2	
487	14 x 3	73,5	15,0	31,5	8,0	24	27	10,0 x 2,0	ASV-K-14x3	
305	16 x 2	73,5	15,0	31,5	12,0	27	30	13,0 x 2,0	ASV-K-16x2	
372	16 x 2,5	73,5	15,0	31,5	11,0	27	30	13,0 x 2,0	ASV-K-16x2,5	
400	16 x 3	73,5	15,0	31,5	10,0	27	30	13,0 x 2,0	ASV-K-16x3	
249	20 x 2	81,0	16,0	33,5	16,0	32	36	16,0 x 2,0	ASV-K-20x2	
305	20 x 2,5	81,0	16,0	33,5	15,0	32	36	16,3 x 2,4	ASV-K-20x2,5	
358	20 x 3	81,0	16,0	33,5	14,0	32	36	16,3 x 2,4	ASV-K-20x3	
400	20 x 4	81,0	16,0	33,5	12,0	32	36	16,3 x 2,4	ASV-K-20x4	
294	25 x 3	90,5	18,0	38,0	19,0	41	46	21,3 x 2,4	ASV-K-25x3	
379	25 x 4	90,5	18,0	38,0	17,0	41	46	21,3 x 2,4	ASV-K-25x4	
400	25 x 5	90,5	18,0	38,0	15,0	41	46	21,3 x 2,4	ASV-K-25x5	
249	30 x 3	96,5	19,0	39,5	24,0	46	50	25,3 x 2,4	ASV-K-30x3	
323	30 x 4	96,5	19,0	39,5	22,0	46	50	25,3 x 2,4	ASV-K-30x4	
393	30 x 5	96,5	19,0	39,5	20,0	46	50	25,3 x 2,4	ASV-K-30x5	
400	30 x 6	96,5	19,0	39,5	18,0	46	50	25,3 x 2,4	ASV-K-30x6	
261	38 x 4	108,5	21,0	54,0	30,0	55	60	34,0 x 2,5	ASV-K-38x4	
315	38 x 5	108,5	21,0	54,0	28,0	55	60	34,0 x 2,5	ASV-K-38x5	
315	38 x 6	108,5	21,0	54,0	26,0	55	60	34,0 x 2,5	ASV-K-38x6	
315	38 x 7	108,5	21,0	54,0	24,0	55	60	34,0 x 2,5	ASV-K-38x7	
250	50 x 5	117,0	23,0	49,0	40,0	70	80	46,0 x 3,0	ASV-K-50x5	
310	50 x 6	117,0	23,0	49,0	38,0	70	80	46,0 x 3,0	ASV-K-50x6	
350	50 x 7	117,0	23,0	49,0	36,0	70	80	46,0 x 3,0	ASV-K-50x7	

Reihe / Series L

Druck Pressure	Rohr A.D. Tube O.D.	Ca. Maße Approx. Dimensions						O-Ring O-ring	Bemerkungen Notes	Bestellzeichen Order-Code
PN	D+W	L	L1	L2	di	SW1	SW3			
323	15 x 2	62,5	15,0	26,0	11,0	22	27	12,0 x 2,0	ASV-K-15x2	
315	18 x 2	65,5	16,0	27,5	14,0	27	32	15,0 x 2,0	ASV-K-18x2	
280	22 x 2,5	74,5	19,0	34,5	17,0	32	36	19,0 x 2,0	ASV-K-22x2,5	
265	28 x 3	78,5	19,0	35,5	22,0	41	41	25,0 x 2,0	ASV-K-28x3	
231	35 x 3	87,5	22,0	37,5	29,0	46	50	32,0 x 2,5	ASV-K-35x3	
182	42 x 3	86,5	22,0	37,0	36,0	55	60	38,0 x 2,5	ASV-K-42x3	

ASV-K - SCHWEISSKEGEL - VERSCHRAUBUNGEN

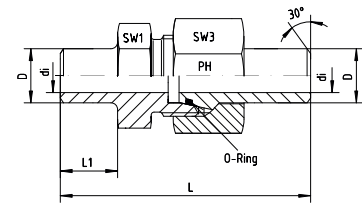
ASV-K - WELDING - NIPPLE - COUPLINGS



EDELSTAHL / STAINLESS STEEL
VERBINDUNGSTECHNIK
FLUID CONNECTORS

Schweißkegel-Verschraubungen
Mit O-Ring Abdichtung - NBR
Auf Anfrage: FPM

Welding Nipple Couplings
With O-ring Sealing - NBR
On request: FPM



Reihe / Series S

Druck Pressure	Rohr A.D. Tube O.D.	Ca. Maße Approx. Dimensions						O-Ring O-ring	Bemerkungen Notes	Bestellzeichen Order-Code
PN		L	L1	D	di	SW1	SW3			
528	6 x 1,5			6,0	3,0	14	17	4,0 x 1,5		ASV-K-6x1,5-SC
414	8 x 1,5			8,0	5,0	17	19	6,0 x 1,5		ASV-K-8x1,5-SC
528	8 x 2			8,0	4,0	17	19	6,0 x 1,5		ASV-K-8x2-SC
249	10 x 1	58,0	10,0	10,0	8,0	19	22	8,0 x 1,5		ASV-K-10x1-SC
358	10 x 1,5	58,0	10,0	10,0	7,0	19	22	8,0 x 1,5		ASV-K-10x1,5-SC
460	10 x 2	58,0	10,0	10,0	6,0	19	22	8,0 x 1,5		ASV-K-10x2-SC
305	12 x 1,5	63,0	15,0	12,0	9,0	22	24	10,0 x 1,5		ASV-K-12x1,5-SC
393	12 x 2	63,0	15,0	12,0	8,0	22	24	10,0 x 1,5		ASV-K-12x2-SC
476	12 x 2,5	63,0	15,0	12,0	7,0	22	24	10,0 x 1,5		ASV-K-12x2,5-SC
343	14 x 2			14,0	10,0	24	27	10,0 x 2,0		ASV-K-14x2-SC
487	14 x 3			14,0	8,0	24	27	10,0 x 2,0		ASV-K-14x3-SC
305	16 x 2	73,5	16,5	16,0	12,0	27	30	13,0 x 2,0		ASV-K-16x2-SC
372	16 x 2,5	73,5	16,5	16,0	11,0	27	30	13,0 x 2,0		ASV-K-16x2,5-SC
400	16 x 3	73,5	16,5	16,0	10,0	27	30	13,0 x 2,0		ASV-K-16x3-SC
249	20 x 2	83,5	19,0	20,0	16,0	32	36	16,0 x 2,0		ASV-K-20x2-SC
305	20 x 2,5	83,5	19,0	20,0	15,0	32	36	16,3 x 2,4		ASV-K-20x2,5-SC
358	20 x 3	83,5	19,0	20,0	14,0	32	36	16,3 x 2,4		ASV-K-20x3-SC
400	20 x 4	83,5	19,0	20,0	12,0	32	36	16,3 x 2,4		ASV-K-20x4-SC
294	25 x 3	92,5	19,5	25,0	19,0	41	46	21,3 x 2,4		ASV-K-25x3-SC
379	25 x 4	92,5	19,5	25,0	17,0	41	46	21,3 x 2,4		ASV-K-25x4-SC
400	25 x 5	92,5	19,5	25,0	15,0	41	46	21,3 x 2,4		ASV-K-25x5-SC
249	30 x 3	101,5	23,0	30,0	24,0	46	50	25,3 x 2,4		ASV-K-30x3-SC
323	30 x 4	101,5	23,0	30,0	22,0	46	50	25,3 x 2,4		ASV-K-30x4-SC
393	30 x 5	101,5	23,0	30,0	20,0	46	50	25,3 x 2,4		ASV-K-30x5-SC
400	30 x 6	101,5	23,0	30,0	18,0	46	50	25,3 x 2,4		ASV-K-30x6-SC
261	38 x 4	108,0	22,0	38,0	30,0	55	60	34,0 x 2,5		ASV-K-38x4-SC
315	38 x 5	108,0	22,0	38,0	28,0	55	60	34,0 x 2,5		ASV-K-38x5-SC
315	38 x 6	108,0	22,0	38,0	26,0	55	60	34,0 x 2,5		ASV-K-38x6-SC
315	38 x 7	108,0	22,0	38,0	24,0	55	60	34,0 x 2,5		ASV-K-38x7-SC
250	50 x 5	118,0	23,0	50,0	40,0	70	80	46,0 x 3,0		ASV-K-50x5-SC
310	50 x 6	118,0	23,0	50,0	38,0	70	80	46,0 x 3,0		ASV-K-50x6-SC
350	50 x 7	118,0	23,0	50,0	36,0	70	80	46,0 x 3,0		ASV-K-50x7-SC

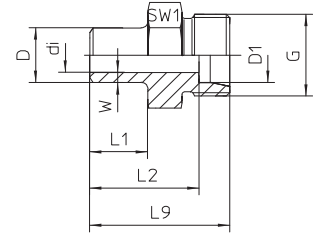
Reihe / Series L

Druck Pressure	Rohr A.D. Tube O.D.	Ca. Maße Approx. Dimensions						O-Ring O-ring	Bemerkungen Notes	Bestellzeichen Order-Code
PN		L	L1	D	di	SW1	SW3			
323	15 x 2	54,5	15,0	15,0	11,0	22	27	12,0 x 2,0		ASV-K-15x2-SC
315	18 x 2	57,5	16,0	18,0	14,0	27	32	15,0 x 2,0		ASV-K-18x2-SC
280	22 x 2,5	74,0	19,0	22,0	17,0	32	36	19,0 x 2,0		ASV-K-22x2,5-SC
265	28 x 3	78,0	19,0	28,0	22,0	41	41	25,0 x 2,0		ASV-K-28x3-SC
231	35 x 3	87,5	22,0	35,0	29,0	46	50	32,0 x 2,5		ASV-K-35x3-SC
182	42 x 3	87,0	22,0	42,0	36,0	55	60	38,0 x 2,5		ASV-K-42x3-SC



Schweißkegel-Verschraubungsstutzen

Welding Coupling Bodies



Reihe / Series S

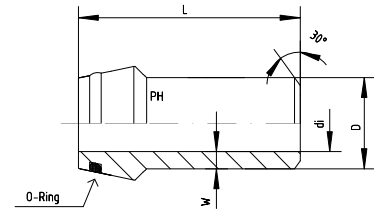
Druck Pressure	Rohr A.D. Tube O.D.	Ca. Maße Approx. Dimensions							Bemerkungen Notes	Bestellzeichen Order-Code
PN	D+W	D1	G	L1	L2	L9	di	SW1		
528	6 x 1,5	6,0	14 x 1,5	10,0	20,0	27,0	3,0	14	ASV-K-6x1,5-OMD	
414	8 x 1,5	8,0	16 x 1,5	10,0	20,0	27,0	5,0	17	ASV-K-8x1,5-OMD	
528	8 x 2	8,0	16 x 1,5	10,0	20,0	27,0	4,0	17	ASV-K-8x2-OMD	
249	10 x 1	10,0	18 x 1,5	9,0	23,5	30,0	8,0	19	ASV-K-10x1-OMD	
358	10 x 1,5	10,0	18 x 1,5	9,0	23,5	30,0	7,0	19	ASV-K-10x1,5-OMD	
460	10 x 2	10,0	18 x 1,5	9,0	23,5	30,0	6,0	19	ASV-K-10x2-OMD	
305	12 x 1,5	12,0	20 x 1,5	14,0	28,5	36,0	9,0	22	ASV-K-12x1,5-OMD	
393	12 x 2	12,0	20 x 1,5	14,0	28,5	36,0	8,0	22	ASV-K-12x2-OMD	
476	12 x 2,5	12,0	20 x 1,5	14,0	28,5	36,0	7,0	22	ASV-K-12x2,5-OMD	
343	14 x 2	14,0	22 x 1,5	15,0	31,5	39,5	10,0	24	ASV-K-14x2-OMD	
487	14 x 3	14,0	22 x 1,5	15,0	31,5	39,5	8,0	24	ASV-K-14x3-OMD	
305	16 x 2	16,0	24 x 1,5	15,0	31,5	40,0	12,0	27	ASV-K-16x2-OMD	
372	16 x 2,5	16,0	24 x 1,5	15,0	31,5	40,0	11,0	27	ASV-K-16x2,5-OMD	
400	16 x 3	16,0	24 x 1,5	15,0	31,5	40,0	10,0	27	ASV-K-16x3-OMD	
249	20 x 2	20,0	30 x 2	16,0	33,5	44,0	16,0	32	ASV-K-20x2-OMD	
305	20 x 2,5	20,0	30 x 2	16,0	33,5	44,0	15,0	32	ASV-K-20x2,5-OMD	
358	20 x 3	20,0	30 x 2	16,0	33,5	44,0	14,0	32	ASV-K-20x3-OMD	
400	20 x 4	20,0	30 x 2	16,0	33,5	44,0	12,0	32	ASV-K-20x4-OMD	
294	25 x 3	25,0	36 x 2	18,0	38,0	50,0	19,0	41	ASV-K-25x3-OMD	
379	25 x 4	25,0	36 x 2	18,0	38,0	50,0	17,0	41	ASV-K-25x4-OMD	
400	25 x 5	25,0	36 x 2	18,0	38,0	50,0	15,0	41	ASV-K-25x5-OMD	
249	30 x 3	30,0	42 x 2	19,0	39,5	53,0	24,0	46	ASV-K-30x3-OMD	
323	30 x 4	30,0	42 x 2	19,0	39,5	53,0	22,0	46	ASV-K-30x4-OMD	
393	30 x 5	30,0	42 x 2	19,0	39,5	53,0	20,0	46	ASV-K-30x5-OMD	
400	30 x 6	30,0	42 x 2	19,0	39,5	53,0	18,0	46	ASV-K-30x6-OMD	
261	38 x 4	38,0	52 x 2	21,0	54,0	60,0	30,0	55	ASV-K-38x4-OMD	
315	38 x 5	38,0	52 x 2	21,0	54,0	60,0	28,0	55	ASV-K-38x5-OMD	
315	38 x 6	38,0	52 x 2	21,0	54,0	60,0	26,0	55	ASV-K-38x6-OMD	
315	38 x 7	38,0	52 x 2	21,0	54,0	60,0	24,0	55	ASV-K-38x7-OMD	
250	50 x 5	50,0	68 x 2	23,0	49,0	67,0	40,0	70	ASV-K-50x5-OMD	
310	50 x 6	50,0	68 x 2	23,0	49,0	67,0	38,0	70	ASV-K-50x6-OMD	
350	50 x 7	50,0	68 x 2	23,0	49,0	67,0	36,0	70	ASV-K-50x7-OMD	

Reihe / Series L

Druck Pressure	Rohr A.D. Tube O.D.	Ca. Maße Approx. Dimensions							Bemerkungen Notes	Bestellzeichen Order-Code
PN	D+W	D1	G	L1	L2	L9	di	SW1		
323	15 x 2	15,0	22 x 1,5	15,0	26,0	33,0	11,0	22	ASV-K-15x2-OMD	
315	18 x 2	18,0	26 x 1,5	16,0	27,5	35,0	14,0	27	ASV-K-18x2-OMD	
280	22 x 2,5	22,0	30 x 2	19,0	34,5	42,0	17,0	32	ASV-K-22x2,5-OMD	
265	28 x 3	28,0	36 x 2	19,0	35,5	43,0	22,0	41	ASV-K-28x3-OMD	
231	35 x 3	35,0	45 x 2	22,0	37,5	48,0	29,0	46	ASV-K-35x3-OMD	
182	42 x 3	42,0	52 x 2	22,0	37,0	48,0	36,0	55	ASV-K-42x3-OMD	

Mit O-Ring Abdichtung - NBR
Auf Anfrage: FPM
Passend in 24°-Innenkonus
Bohrungsform W DIN 3861

With O-ring Sealing - NBR
On request: FPM
Matching Type 24°-Inside Tapers
Bore Type W DIN 3861



Reihe / Series L + S

Druck Pressure	D x W D x W	Ca. Maße Approx. Dimensions	O-Ring O-ring	Bemerkungen Notes	Bestellzeichen Order-Code
PN		L d _i			
528	6 x 1,5	31,0 3,0	4,0 x 1,5		SKV-6x1,5
692	6 x 2	31,0 2,0	4,0 x 1,5		SKV-6x2
414	8 x 1,5	31,0 5,0	6,0 x 1,5		SKV-8x1,5
528	8 x 2	31,0 4,0	6,0 x 1,5		SKV-8x2
249	10 x 1	32,5 8,0	8,0 x 1,5		SKV-10x1
358	10 x 1,5	32,5 7,0	8,0 x 1,5		SKV-10x1,5
460	10 x 2	32,5 6,0	8,0 x 1,5		SKV-10x2
305	12 x 1,5	32,5 9,0	10,0 x 1,5		SKV-12x1,5
393	12 x 2	32,5 8,0	10,0 x 1,5		SKV-12x2
476	12 x 2,5	32,5 7,0	10,0 x 1,5		SKV-12x2,5
476	12 x 3	32,5 6,0	10,0 x 1,5		SKV-12x3

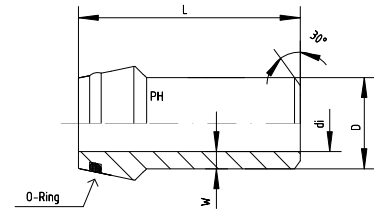
Reihe / Series S

Druck Pressure	D x W D x W	Ca. Maße Approx. Dimensions	O-Ring O-ring	Bemerkungen Notes	Bestellzeichen Order-Code
PN		L d _i			
343	14 x 2	40,0 10,0	10,0 x 2,0		SKV-14x2
415	14 x 2,5	40,0 9,0	10,0 x 2,0		SKV-14x2,5
487	14 x 3	40,0 8,0	10,0 x 2,0		SKV-14x3
305	16 x 2	38,5 12,0	13,0 x 2,0		SKV-16x2
372	16 x 2,5	38,5 11,0	13,0 x 2,0		SKV-16x2,5
435	16 x 3	38,5 10,0	13,0 x 2,0		SKV-16x3
249	20 x 2	44,5 16,0	16,0 x 2,0		SKV-20x2
305	20 x 2,5	44,5 15,0	16,3 x 2,4		SKV-20x2,5
358	20 x 3	44,5 14,0	16,3 x 2,4		SKV-20x3
460	20 x 4	44,5 12,0	16,3 x 2,4		SKV-20x4
294	25 x 2,5	49,5 20,0	21,3 x 2,4		SKV-25x2,5
294	25 x 3	49,5 19,0	21,3 x 2,4		SKV-25x3
337	25 x 3,5	49,5 18,0	21,3 x 2,4		SKV-25x3,5
379	25 x 4	49,5 17,0	21,3 x 2,4		SKV-25x4
460	25 x 5	49,5 15,0	21,3 x 2,4		SKV-25x5
245	30 x 2,5	52,0 25,0	25,3 x 2,4		SKV-30x2,5
249	30 x 3	52,0 24,0	25,3 x 2,4		SKV-30x3
323	30 x 4	52,0 22,0	25,3 x 2,4		SKV-30x4
393	30 x 5	52,0 20,0	25,3 x 2,4		SKV-30x5
460	30 x 6	52,0 18,0	25,3 x 2,4		SKV-30x6
261	38 x 4	56,5 30,0	34,0 x 2,5		SKV-38x4
319	38 x 5	56,5 28,0	34,0 x 2,5		SKV-38x5
375	38 x 6	56,5 26,0	34,0 x 2,5		SKV-38x6
429	38 x 7	56,5 24,0	34,0 x 2,5		SKV-38x7
250	50 x 5	61,0 40,0	46,0 x 3,0		SKV-50x5
310	50 x 6	61,0 38,0	46,0 x 3,0		SKV-50x6
350	50 x 7	61,0 36,0	46,0 x 3,0		SKV-50x7



Mit O-Ring Abdichtung - NBR
Auf Anfrage: FPM
Passend in 24°-Innenkonus
Bohrungsform W DIN 3861

With O-ring Sealing - NBR
On request: FPM
Matching Type 24°-Inside Tapers
Bore Type W DIN 3861



Reihe / Series L

Druck Pressure	D x W D x W	Ca. Maße Approx. Dimensions	O-Ring O-ring	Bemerkungen Notes	Bestellzeichen Order-Code
PN		L di			
270	15 x 1,5	36,0 12,0	12,0 x 2,0		SKV-15x1,5
323	15 x 2	36,0 11,0	12,0 x 2,0		SKV-15x2
393	15 x 2,5	36,0 10,0	12,0 x 2,0		SKV-15x2,5
225	18 x 1,5	37,0 15,0	16,0 x 1,5		SKV-18x1,5
300	18 x 2	37,0 14,0	15,0 x 2,0		SKV-18x2
335	18 x 2,5	37,0 13,0	15,0 x 2,0		SKV-18x2,5
245	22 x 2	38,5 18,0	19,0 x 2,0		SKV-22x2
280	22 x 2,5	38,5 17,0	19,0 x 2,0		SKV-22x2,5
328	22 x 3	38,5 16,0	19,0 x 2,0		SKV-22x3
193	28 x 2	41,5 24,0	25,0 x 2,0		SKV-28x2
224	28 x 2,5	41,5 23,0	25,0 x 2,0		SKV-28x2,5
265	28 x 3	41,5 22,0	25,0 x 2,0		SKV-28x3
154	35 x 2	47,0 31,0	32,0 x 2,5		SKV-35x2
193	35 x 2,5	47,0 30,0	32,0 x 2,5		SKV-35x2,5
231	35 x 3	47,0 29,0	32,0 x 2,5		SKV-35x3
249	35 x 3,5	47,0 28,0	32,0 x 2,5		SKV-35x3,5
249	35 x 4	47,0 27,0	32,0 x 2,5		SKV-35x4
129	42 x 2	47,0 38,0	39,0 x 1,5		SKV-42x2
150	42 x 2,5	47,0 37,0	39,0 x 1,5		SKV-42x2,5
182	42 x 3	47,0 36,0	38,0 x 2,5		SKV-42x3
238	42 x 4	47,0 34,0	38,0 x 2,5		SKV-42x4

SKV-R - SCHWEISSNIPPEL - REDUZIERUNGEN

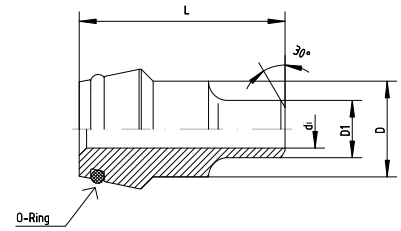
SKV-R - WELDING - NIPPLE - REDUCINGS



EDELSTAHL / STAINLESS STEEL
VERBINDUNGSTECHNIK
FLUID CONNECTORS

Mit O-Ring Abdichtung - NBR
Auf Anfrage: FPM
Passend in 24°-Innenkonus
Bohrungsform W DIN 3861

With O-ring Sealing - NBR
On request: FPM
Matching Type 24°-Inside Tapers
Bore Type W DIN 3861



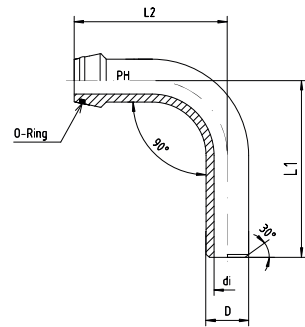
Reihe / Series S

Druck Pressure	Ca. Maße Approx. Dimensions				O-Ring O-ring	Bemerkungen Notes	Bestellzeichen Order-Code
PN	D1	L	D	di			
380	6	30,0	8,0	4,0	6,0 x 1,5		SKV-R-8/6x1
528	6	30,0	8,0	3,0	6,0 x 1,5		SKV-R-8/6x1,5
414	8	32,0	10,0	5,0	8,0 x 1,5		SKV-R-10/8x1,5
528	8	32,0	10,0	4,0	8,0 x 1,5		SKV-R-10/8x2
528	6	32,0	10,0	3,0	8,0 x 1,5		SKV-R-10/6x1,5
380	6	32,0	12,0	4,0	10,0 x 1,5		SKV-R-12/6x1
528	6	32,0	12,0	3,0	10,0 x 1,5		SKV-R-12/6x1,5
414	8	32,0	12,0	5,0	10,0 x 1,5		SKV-R-12/8x1,5
358	10	32,0	12,0	7,0	10,0 x 1,5		SKV-R-12/10x1,5
460	10	32,0	12,0	6,0	10,0 x 1,5		SKV-R-12/10x2
692	6	33,0	16,0	2,0	13,0 x 2,0		SKV-R-16/6x2
414	8	39,0	16,0	5,0	13,0 x 2,0		SKV-R-16/8x1,5
460	10	39,0	16,0	6,0	13,0 x 2,0		SKV-R-16/10x2
393	12	39,0	16,0	8,0	13,0 x 2,0		SKV-R-16/12x2
305	12	37,0	18,0	9,0	15,0 x 2,0		SKV-R-18/12x1,5
414	8	43,0	20,0	5,0	16,3 x 2,4		SKV-R-20/8x1,5
358	10	43,0	20,0	7,0	16,3 x 2,4		SKV-R-20/10x1,5
393	12	43,0	20,0	8,0	16,3 x 2,4		SKV-R-20/12x2
305	16	43,0	20,0	12,0	16,3 x 2,4		SKV-R-20/16x2
372	16	43,0	20,0	11,0	16,3 x 2,4		SKV-R-20/16x2,5
435	16	43,0	20,0	10,0	16,3 x 2,4		SKV-R-20/16x3
335	18	39,0	22,0	13,0	19,0 x 2,0		SKV-R-22/18x2,5
460	10	50,0	25,0	6,0	21,3 x 2,4		SKV-R-25/10x2
393	12	50,0	25,0	8,0	21,3 x 2,4		SKV-R-25/12x2
305	16	50,0	25,0	12,0	21,3 x 2,4		SKV-R-25/16x2
372	16	50,0	25,0	11,0	21,3 x 2,4		SKV-R-25/16x2,5
435	16	50,0	25,0	10,0	21,3 x 2,4		SKV-R-25/16x3
249	20	50,0	25,0	16,0	21,3 x 2,4		SKV-R-25/20x2
305	20	50,0	25,0	15,0	21,3 x 2,4		SKV-R-25/20x2,5
358	20	50,0	25,0	14,0	21,3 x 2,4		SKV-R-25/20x3
358	10	52,0	30,0	7,0	25,3 x 2,4		SKV-R-30/10x1,5
393	12	52,0	30,0	8,0	25,3 x 2,4		SKV-R-30/12x2
305	16	52,0	30,0	12,0	25,3 x 2,4		SKV-R-30/16x2
435	16	52,0	30,0	10,0	25,3 x 2,4		SKV-R-30/16x3
358	20	52,0	30,0	14,0	25,3 x 2,4		SKV-R-30/20x3
379	25	52,0	30,0	17,0	25,3 x 2,4		SKV-R-30/25x4
294	25	52,0	30,0	19,0	25,3 x 2,4		SKV-R-30/25x3
358	10	58,0	38,0	7,0	34,0 x 2,5		SKV-R-38/10x1,5
393	12	58,0	38,0	8,0	34,0 x 2,5		SKV-R-38/12x2
305	16	58,0	38,0	12,0	34,0 x 2,5		SKV-R-38/16x2
435	16	58,0	38,0	10,0	34,0 x 2,5		SKV-R-38/16x3
249	20	58,0	38,0	16,0	34,0 x 2,5		SKV-R-38/20x2
305	20	58,0	38,0	15,0	34,0 x 2,5		SKV-R-38/20x2,5
358	20	58,0	38,0	14,0	34,0 x 2,5		SKV-R-38/20x3
294	25	58,0	38,0	19,0	34,0 x 2,5		SKV-R-38/25x3
379	25	58,0	38,0	17,0	34,0 x 2,5		SKV-R-38/25x4
249	30	58,0	38,0	24,0	34,0 x 2,5		SKV-R-38/30x3
323	30	58,0	38,0	22,0	34,0 x 2,5		SKV-R-38/30x4



Mit O-Ring Abdichtung - NBR
Auf Anfrage: FPM
Passend in 24°-Innenkonus
Bohrungsform W DIN 3861

With O-ring Sealing - NBR
On request: FPM
Matching Type 24°-Inside Tapers
Bore Type W DIN 3861



Reihe / Series S

Druck Pressure	Rohr Tube	Ca. Maße Approx. Dimensions				O-Ring O-ring	Bemerkungen Notes	Bestellzeichen Order-Code
		L1	L2	D	di			
PN								
460	10 x 2	49,0	51,0	10,0	6,0	8,0 x 1,5		SKV-RB-10x2
393	12 x 2	50,0	51,0	12,0	8,0	10,0 x 1,5		SKV-RB-12x2
476	12 x 2,5	50,0	51,0	12,0	7,0	10,0 x 1,5		SKV-RB-12x2,5
305	16 x 2	72,0	67,0	16,0	12,0	13,0 x 2,0		SKV-RB-16x2
372	16 x 2,5	72,0	67,0	16,0	11,0	13,0 x 2,0		SKV-RB-16x2,5
435	16 x 3	72,0	67,0	16,0	10,0	13,0 x 2,0		SKV-RB-16x3
249	20 x 2	89,0	86,0	20,0	16,0	16,3 x 2,4		SKV-RB-20x2
305	20 x 2,5	89,0	86,0	20,0	15,0	16,3 x 2,4		SKV-RB-20x2,5
358	20 x 3	89,0	86,0	20,0	14,0	16,3 x 2,4		SKV-RB-20x3
294	25 x 3	93,0	89,0	25,0	19,0	21,3 x 2,4		SKV-RB-25x3
379	25 x 4	93,0	89,0	25,0	17,0	21,3 x 2,4		SKV-RB-25x4
460	25 x 5	93,0	89,0	25,0	15,0	21,3 x 2,4		SKV-RB-25x5
323	30 x 4	112,0	105,0	30,0	22,0	25,3 x 2,4		SKV-RB-30x4
393	30 x 5	112,0	105,0	30,0	20,0	25,3 x 2,4		SKV-RB-30x5
460	30 x 6	112,0	105,0	30,0	18,0	25,3 x 2,4		SKV-RB-30x6
261	38 x 4	145,0	137,0	38,0	30,0	34,0 x 2,5		SKV-RB-38x4
319	38 x 5	145,0	137,0	38,0	28,0	34,0 x 2,5		SKV-RB-38x5
375	38 x 6	145,0	137,0	38,0	26,0	34,0 x 2,5		SKV-RB-38x6
429	38 x 7	145,0	137,0	38,0	24,0	34,0 x 2,5		SKV-RB-38x7

Reihe / Series L

Druck Pressure	Rohr Tube	Ca. Maße Approx. Dimensions				O-Ring O-ring	Bemerkungen Notes	Bestellzeichen Order-Code
		L1	L2	D	di			
PN								
328	22 x 3	79,0	85,0	22,0	16,0	19,0 x 2,0		SKV-RB-22x3



423 046

DB

186
CA



EDELSTAHL / STAINLESS STEEL
VERBINDUNGSTECHNIK
FLUID CONNECTORS

Winkel-Drehverschraubungen Elbow Rotary Couplings





WINKEL-DREHVERSCHRAUBUNGEN ELBOW ROTARY COUPLINGS

Produktgruppen	Product-Groups	Seite / Page
Anwendung	Application	11.2-11.3
DGWE - Winkel - Drehverschraubungen	DGWE - Rotary - Couplings	
DGWE - Whitworth - Zylindrisch - Standard	DGWE - BSP - Parallel - Standard	11.4
DGWE - Whitworth - Zylindrisch - SC	DGWE - BSP - Parallel - SC	11.5
DGWE - Whitworth - Zylindrisch - OMD	DGWE - BSP - Parallel - OMD	11.6



Standard = Überwurfmutter blank / Tube nuts are supplied unplated
SC = Überwurfmutter bis Größe 12-S ist gleitbeschichtet / Tube nuts until size 12-L are supplied chemical plated
= Überwurfmutter ab Größe 12-S ist mit versilbertem Gewinde / Tube nuts from size 12-S are supplied with silver plated thread
OMD = Verschraubung ohne Überwurfmutter und Schneidring am Außengewinde / Couplings are supplied without nut and cutting ring at male thread



Drehverschraubungen sind Verbindungselemente für die Übertragung von Schwenk- und Drehbewegungen mit geringer Winkelgeschwindigkeit zwischen Aggregaten und Leitungen. Die Verbindungen sind wartungsfrei, ohne Leckverluste und haben niedrige Anlaufdrehmomente.

Hinweis:

Zum Ausgleich jeder Fluchtungsungenauigkeit wird die Verwendung eines flexiblen Anschlusses dringend empfohlen. Die Lebensdauer der Dichtelemente ist abhängig vom Betriebsdruck, der Gleitgeschwindigkeit und dem Medium. Die Drehverschraubungen sind nur für schmierende Medien geeignet.

Temperatur -15°C bis +100°C.

Andere Anschlussarten und Dichtungskombinationen auf Anfrage.



Swivel banjos are designed to connect rigid tube to equipment for transmission of swivelling movement and rotation at low angular velocity. These couplings have a low starting torque, are leak free and require no maintenance.

Note:

To compensate any misalignment, the use of a flexible connection is recommended. Life of the sealing elements is dependent upon operating pressure, turning speed and medium.

These rotary couplings are only usable for lubricating media.

Temperature: -15°C to +100°C

Other connections and sealing combinations on request.

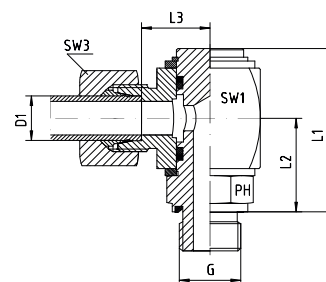
DGWE - WINKEL - DREHVERSCHRAUBUNGEN

DGWE - ROTARY - COUPLINGS



EDELSTAHL / STAINLESS STEEL
VERBINDUNGSTECHNIK
FLUID CONNECTORS

Winkel-Drehverschraubungen
Einschraubgewinde G:
Whitworth-Rohrgewinde - Zylindrisch
Einschraubgewinde G: Metrisch - Zylindrisch
Ausführung: Gehäuse aus Vierkantstahl
Dichtungskombination:
O-Ring + wd = FPM
Stützring = PTFE



Elbow Rotary Couplings
Thread G: BSP - Parallel
Thread G: Metric - Parallel
Construction: Bodies made from Steel Bar
Sealing Combination:
O-ring + wd = FPM
Backing Ring = PTFE

Reihe / Series L

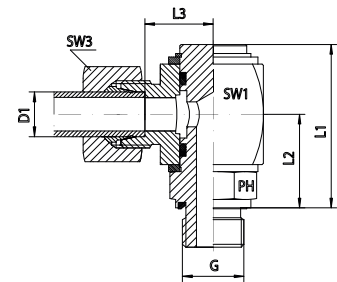
Druck Pressure	Rohr A.D. Tube O.D.		Ca. Maße Approx. Dimensions					Bemerkungen Notes	Bestellzeichen Order-Code
	D1	G	L1	L2	L3	SW1	SW3		
250	6	1/8"	47,0	26,5	16,5	27	14		DGWE-L-06-G 1/8"-wd
250	6	1/4"	47,5	26,5	16,5	27	14		DGWE-L-06-G 1/4"-wd
250	6	3/8"	47,5	26,5	16,5	27	14		DGWE-L-06-G 3/8"-wd
250	8	1/4"	47,5	26,5	16,5	27	17		DGWE-L-08-G 1/4"-wd
250	8	3/8"	47,5	26,5	16,5	27	17		DGWE-L-08-G 3/8"-wd
250	10	1/4"	47,5	26,5	17,5	27	19		DGWE-L-10-G 1/4"-wd
250	10	3/8"	47,5	26,5	17,5	27	19		DGWE-L-10-G 3/8"-wd
250	12	1/4"	47,5	26,5	17,5	27	22		DGWE-L-12-G 1/4"-wd
250	12	3/8"	47,5	26,5	17,5	27	22		DGWE-L-12-G 3/8"-wd
250	12	1/2"	58,5	33,5	23,0	36	22		DGWE-L-12-G 1/2"-wd
250	15	1/2"	58,5	33,5	24,0	36	27		DGWE-L-15-G 1/2"-wd
160	18	1/2"	58,5	33,5	23,5	36	32		DGWE-L-18-G 1/2"-wd
160	22	3/4"	66,0	38,0	27,5	41	36		DGWE-L-22-G 3/4"-wd
100	28	1"	72,0	42,5	29,5	46	41		DGWE-L-28-G 1"-wd
100	35	1 1/4"	92,5	52,0	39,5	65	50		DGWE-L-35-G 1 1/4"-wd
100	42	1 1/2"	102,0	56,0	42,0	75	60		DGWE-L-42-G 1 1/2"-wd

Reihe / Series S

Druck Pressure	Rohr A.D. Tube O.D.		Ca. Maße Approx. Dimensions					Bemerkungen Notes	Bestellzeichen Order-Code
	D1	G	L1	L2	L3	SW1	SW3		
400	6	1/4"	47,5	26,5	18,5	27	17		DGWE-S-06-G 1/4"-wd
400	6	3/8"	47,5	26,5	18,5	27	17		DGWE-S-06-G 3/8"-wd
400	8	1/4"	47,5	26,5	18,5	27	19		DGWE-S-08-G 1/4"-wd
400	8	3/8"	47,5	26,5	18,5	27	19		DGWE-S-08-G 3/8"-wd
400	10	1/4"	47,5	26,5	18,0	27	22		DGWE-S-10-G 1/4"-wd
400	10	3/8"	47,5	26,5	18,0	27	22		DGWE-S-10-G 3/8"-wd
400	12	3/8"	47,5	26,5	18,0	27	24		DGWE-S-12-G 3/8"-wd
400	14	1/2"	58,5	33,5	25,0	36	27		DGWE-S-14-G 1/2"-wd
400	16	1/2"	58,5	33,5	24,5	36	30		DGWE-S-16-G 1/2"-wd
250	20	3/4"	66,0	38,0	26,5	41	36		DGWE-S-20-G 3/4"-wd
250	25	1"	72,0	42,5	29,0	46	46		DGWE-S-25-G 1"-wd
250	30	1 1/4"	92,5	52,0	38,5	65	50		DGWE-S-30-G 1 1/4"-wd
250	38	1 1/2"	102,0	56,0	43,5	75	60		DGWE-S-38-G 1 1/2"-wd
400	16	M 22 x 1,5	58,5	33,5	24,5	36	30		DGWE-S-16-M 22x1,5-wd
250	20	M 27 x 2	66,0	38,0	26,5	41	36		DGWE-S-20-M 27x2-wd



Winkel-Drehverschraubungen
Einschraubgewinde G:
Whitworth-Rohrgewinde - Zylindrisch
Einschraubgewinde G: Metrisch - Zylindrisch
Ausführung: Gehäuse aus Vierkantstahl
Dichtungskombination:
O-Ring + wd = FPM
Stützring = PTFE



Elbow Rotary Couplings
Thread G: BSP - Parallel
Thread G: Metric - Parallel
Construction: Bodies made from Steel Bar
Sealing Combination:
O-ring + wd = FPM
Backing Ring = PTFE

Reihe / Series L

Druck Pressure	Rohr A.D. Tube O.D.		Ca. Maße Approx. Dimensions					Bemerkungen Notes	Bestellzeichen Order-Code
	D1	G	L1	L2	L3	SW1	SW3		
250	6	1/8"	47,0	26,5	16,5	27	14		DGWE-L-06-G 1/8"-wd-SC
250	6	1/4"	47,5	26,5	16,5	27	14		DGWE-L-06-G 1/4"-wd-SC
250	6	3/8"	47,5	26,5	16,5	27	14		DGWE-L-06-G 3/8"-wd-SC
250	8	1/4"	47,5	26,5	16,5	27	17		DGWE-L-08-G 1/4"-wd-SC
250	8	3/8"	47,5	26,5	16,5	27	17		DGWE-L-08-G 3/8"-wd-SC
250	10	1/4"	47,5	26,5	17,5	27	19		DGWE-L-10-G 1/4"-wd-SC
250	10	3/8"	47,5	26,5	17,5	27	19		DGWE-L-10-G 3/8"-wd-SC
250	12	1/4"	47,5	26,5	17,5	27	22		DGWE-L-12-G 1/4"-wd-SC
250	12	3/8"	47,5	26,5	17,5	27	22		DGWE-L-12-G 3/8"-wd-SC
250	12	1/2"	58,5	33,5	23,0	36	22		DGWE-L-12-G 1/2"-wd-SC
250	15	1/2"	58,5	33,5	24,0	36	27		DGWE-L-15-G 1/2"-wd-SC
160	18	1/2"	58,5	33,5	23,5	36	32		DGWE-L-18-G 1/2"-wd-SC
160	22	3/4"	66,0	38,0	27,5	41	36		DGWE-L-22-G 3/4"-wd-SC
100	28	1"	72,0	42,5	29,5	46	41		DGWE-L-28-G 1"-wd-SC
100	35	1 1/4"	92,5	52,0	39,5	65	50		DGWE-L-35-G 1 1/4"-wd-SC
100	42	1 1/2"	102,0	56,0	42,0	75	60		DGWE-L-42-G 1 1/2"-wd-SC

Reihe / Series S

Druck Pressure	Rohr A.D. Tube O.D.		Ca. Maße Approx. Dimensions					Bestellzeichen Order-Code	
	D1	G	L1	L2	L3	SW1	SW3		
400	6	1/4"	47,5	26,5	18,5	27	17		DGWE-S-06-G 1/4"-wd-SC
400	6	3/8"	47,5	26,5	18,5	27	17		DGWE-S-06-G 3/8"-wd-SC
400	8	1/4"	47,5	26,5	18,5	27	19		DGWE-S-08-G 1/4"-wd-SC
400	8	3/8"	47,5	26,5	18,5	27	19		DGWE-S-08-G 3/8"-wd-SC
400	10	1/4"	47,5	26,5	18,0	27	22		DGWE-S-10-G 1/4"-wd-SC
400	10	3/8"	47,5	26,5	18,0	27	22		DGWE-S-10-G 3/8"-wd-SC
400	12	3/8"	47,5	26,5	18,0	27	24		DGWE-S-12-G 3/8"-wd-SC
400	14	1/2"	58,5	33,5	25,0	36	27		DGWE-S-14-G 1/2"-wd-SC
400	16	1/2"	58,5	33,5	24,5	36	30		DGWE-S-16-G 1/2"-wd-SC
250	20	3/4"	66,0	38,0	26,5	41	36		DGWE-S-20-G 3/4"-wd-SC
250	25	1"	72,0	42,5	29,0	46	46		DGWE-S-25-G 1"-wd-SC
250	30	1 1/4"	92,5	52,0	38,5	65	50		DGWE-S-30-G 1 1/4"-wd-SC
250	38	1 1/2"	102,0	56,0	43,5	75	60		DGWE-S-38-G 1 1/2"-wd-SC
400	16	M 22 x 1,5	58,5	33,5	24,5	36	30		DGWE-S-16-M 22x1,5-wd-SC
250	20	M 27 x 2	66,0	38,0	26,5	41	36		DGWE-S-20-M 27x2-wd-SC

DGWE - WINKEL - DREHVERSCHRAUBUNGEN

DGWE - ROTARY - COUPLINGS



EDELSTAHL / STAINLESS STEEL
VERBINDUNGSTECHNIK
FLUID CONNECTORS

Winkel-Drehverschraubungen
Einschraubgewinde G:
Whitworth-Rohrgewinde - Zylindrisch
Einschraubgewinde G: Metrisch - Zylindrisch
Ausführung: Gehäuse aus Vierkantstahl
Dichtungskombination:
O-Ring + wd = FPM
Stützring = PTFE



Elbow Rotary Couplings
Thread G: BSP - Parallel
Thread G: Metric - Parallel
Construction: Bodies made from Steel Bar
Sealing Combination:
O-ring + wd = FPM
Backing Ring = PTFE

Reihe / Series L

Druck Pressure	Rohr A.D. Tube O.D.	Bemerkungen Notes		Bestellzeichen Order-Code
PB	D1	G		
250	6	1/8"		DGWE-L-06-G 1/8"-wd-OMD
250	6	1/4"		DGWE-L-06-G 1/4"-wd-OMD
250	6	3/8"		DGWE-L-06-G 3/8"-wd-OMD
250	8	1/4"		DGWE-L-08-G 1/4"-wd-OMD
250	8	3/8"		DGWE-L-08-G 3/8"-wd-OMD
250	10	1/4"		DGWE-L-10-G 1/4"-wd-OMD
250	10	3/8"		DGWE-L-10-G 3/8"-wd-OMD
250	12	1/4"		DGWE-L-12-G 1/4"-wd-OMD
250	12	3/8"		DGWE-L-12-G 3/8"-wd-OMD
250	12	1/2"		DGWE-L-12-G 1/2"-wd-OMD
250	15	1/2"		DGWE-L-15-G 1/2"-wd-OMD
160	18	1/2"		DGWE-L-18-G 1/2"-wd-OMD
160	22	3/4"		DGWE-L-22-G 3/4"-wd-OMD
100	28	1"		DGWE-L-28-G 1"-wd-OMD
100	35	1 1/4"		DGWE-L-35-G 1 1/4"-wd-OMD
100	42	1 1/2"		DGWE-L-42-G 1 1/2"-wd-OMD

Reihe / Series S

Druck Pressure	Rohr A.D. Tube O.D.	Bemerkungen Notes		Bestellzeichen Order-Code
PB	D1	G		
400	6	1/4"		DGWE-S-06-G 1/4"-wd-OMD
400	6	3/8"		DGWE-S-06-G 3/8"-wd-OMD
400	8	1/4"		DGWE-S-08-G 1/4"-wd-OMD
400	8	3/8"		DGWE-S-08-G 3/8"-wd-OMD
400	10	1/4"		DGWE-S-10-G 1/4"-wd-OMD
400	10	3/8"		DGWE-S-10-G 3/8"-wd-OMD
400	12	3/8"		DGWE-S-12-G 3/8"-wd-OMD
400	14	1/2"		DGWE-S-14-G 1/2"-wd-OMD
400	16	1/2"		DGWE-S-16-G 1/2"-wd-OMD
250	20	3/4"		DGWE-S-20-G 3/4"-wd-OMD
250	25	1"		DGWE-S-25-G 1"-wd-OMD
250	30	1 1/4"		DGWE-S-30-G 1 1/4"-wd-OMD
250	38	1 1/2"		DGWE-S-38-G 1 1/2"-wd-OMD
400	16	M 22 x 1,5		DGWE-S-16-M 22x1,5-wd-OMD
250	20	M 27 x 2		DGWE-S-20-M 27x2-wd-OMD